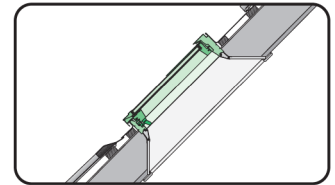
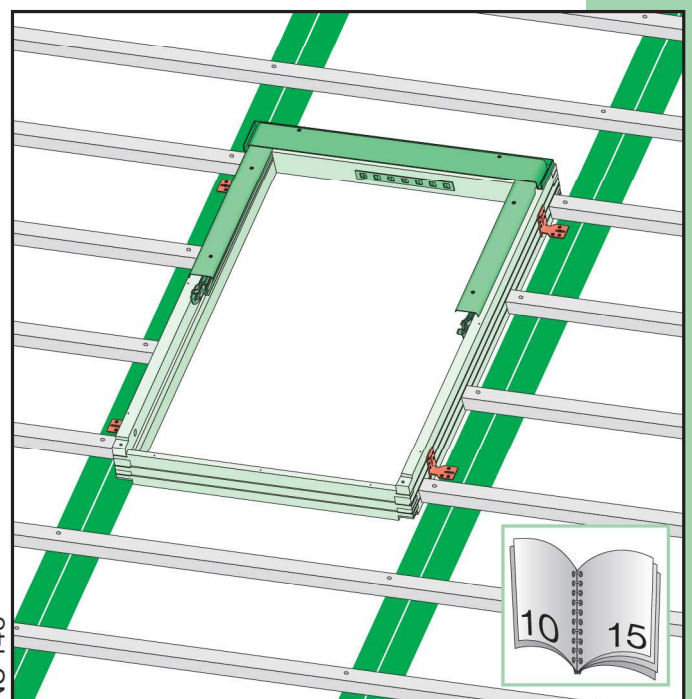
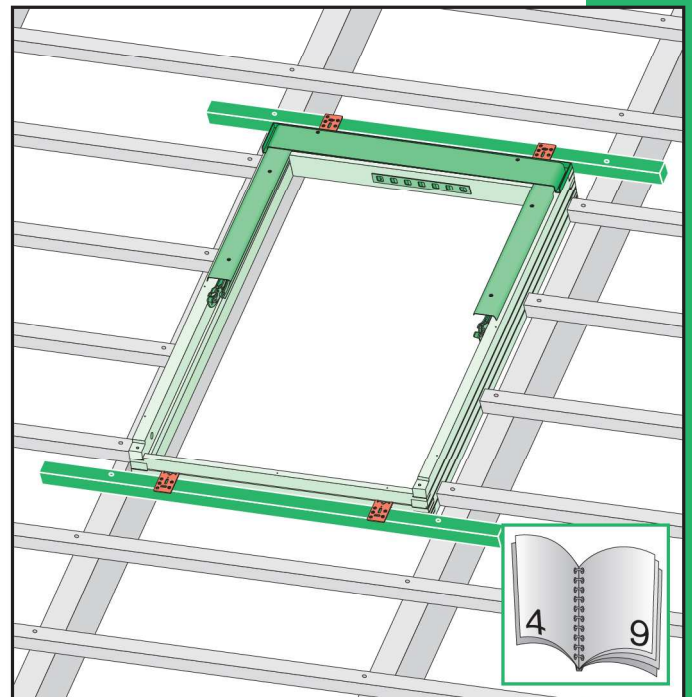
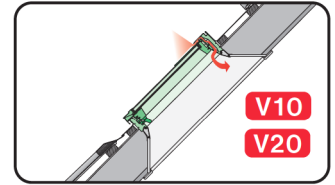


FTS, FTT

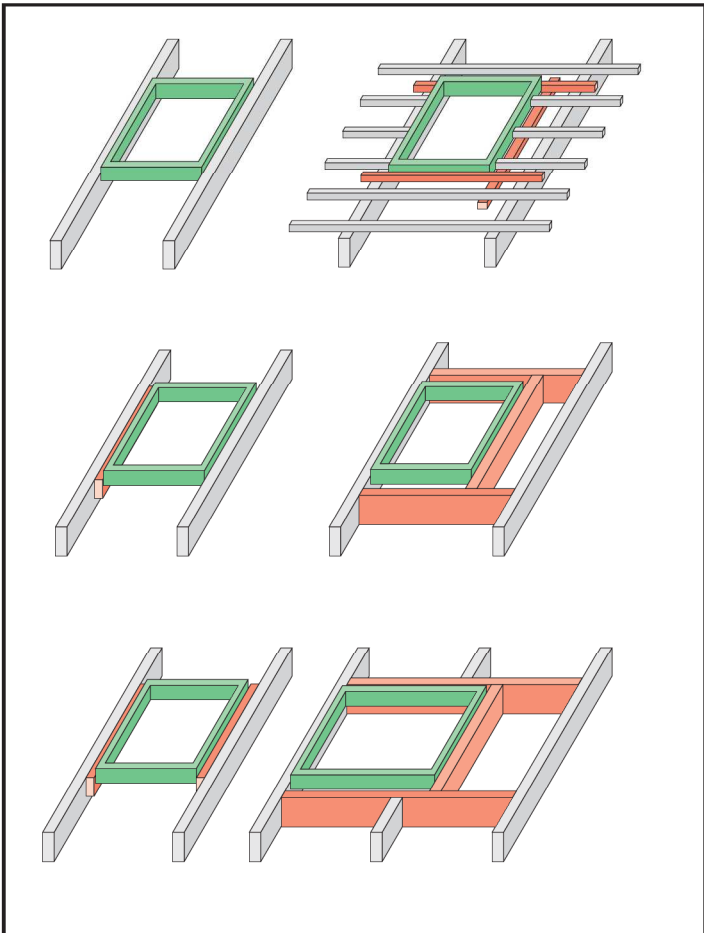
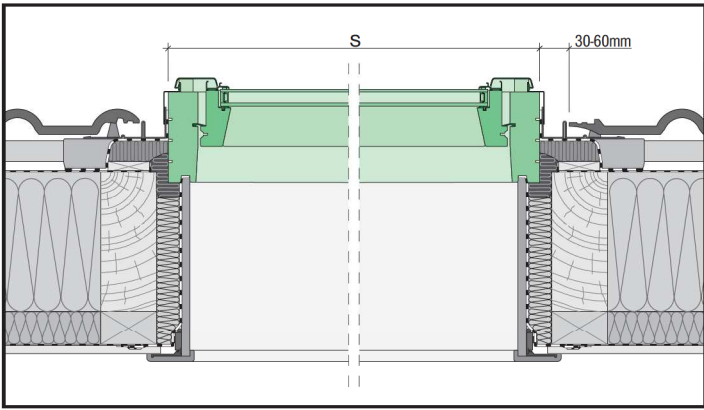
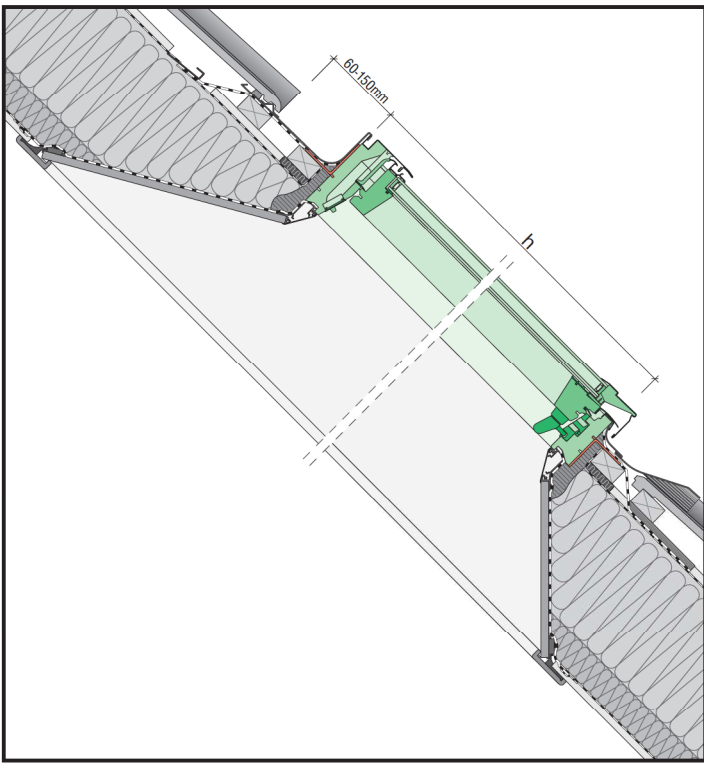


FTS-V

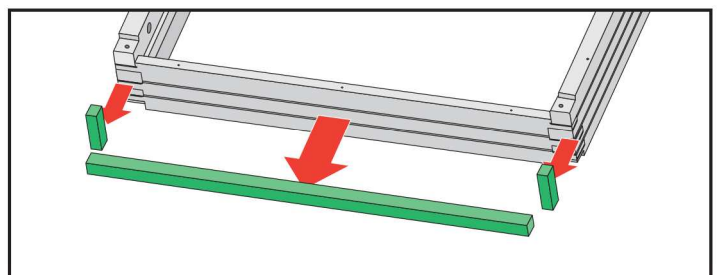
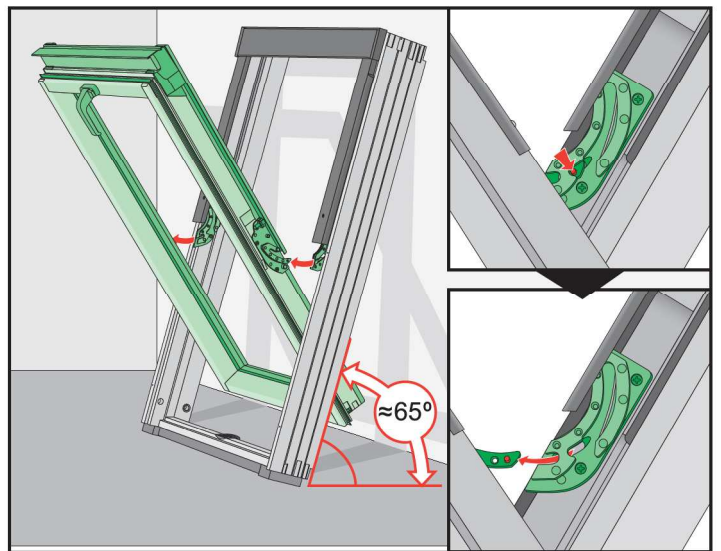
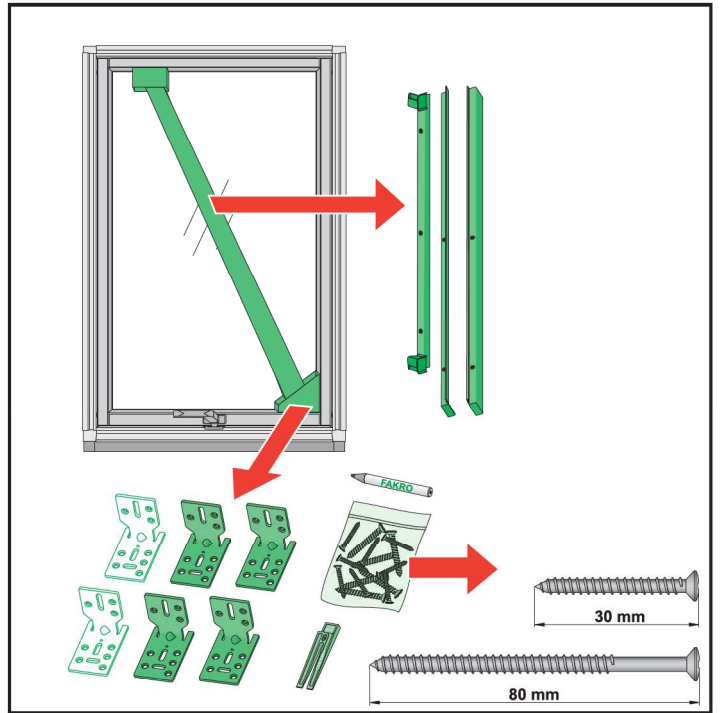
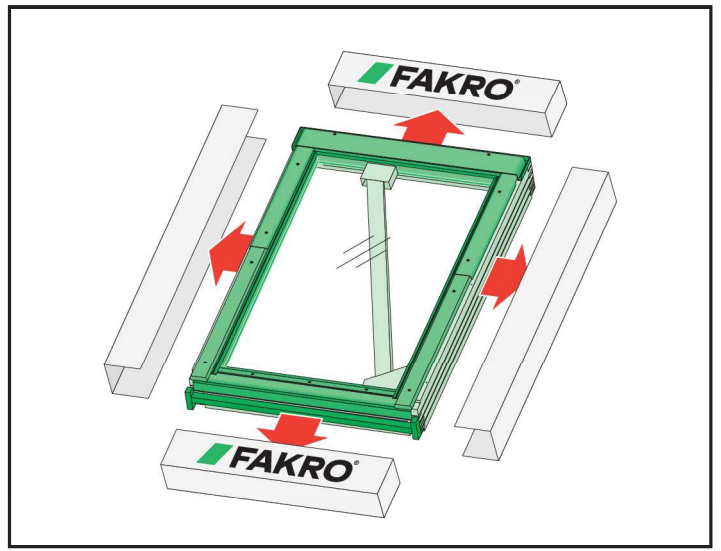


NC 145

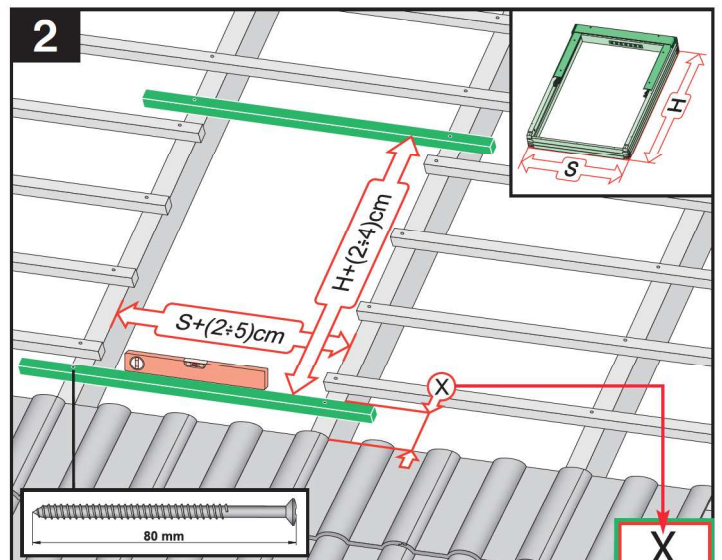
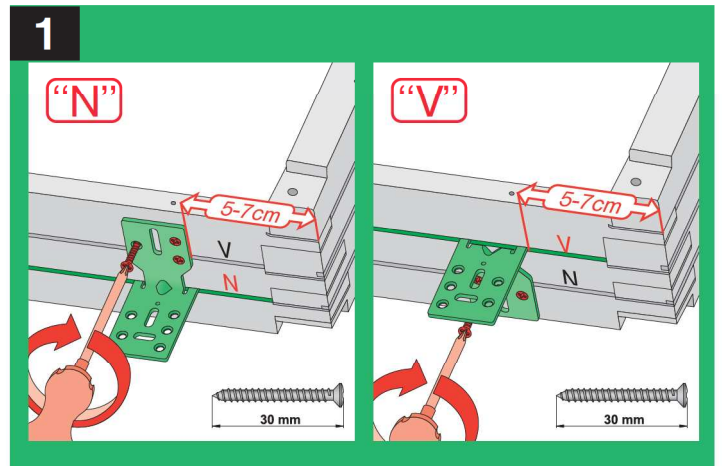
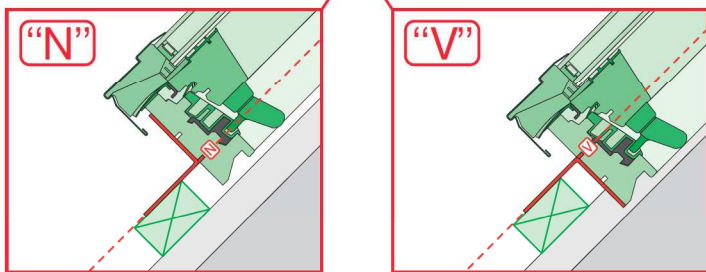
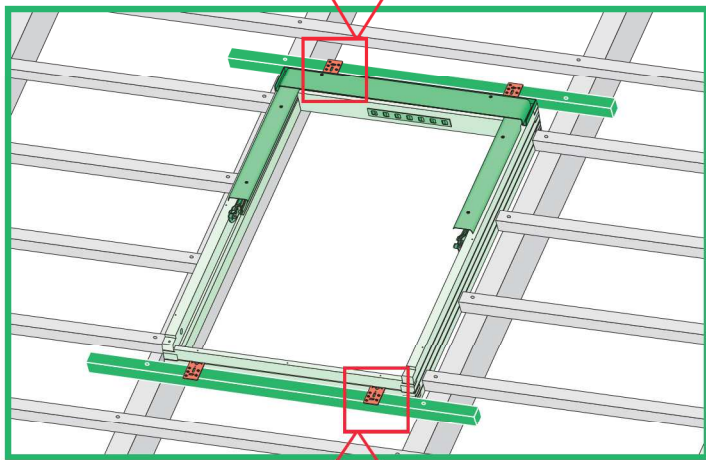
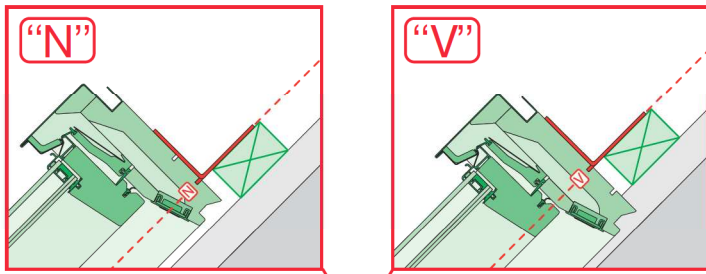
- | | | | |
|-----------|--|------------|--|
| CZ | Výrobce a Prodejce nenesí žádnou odpovědnost za nedodržení příslušných předpisů zákona, stavebních předpisů a bezpečnostních požadavků přes uživatele výrobku, architekta, montéra nebo majitele objektu. | I | Il Produttore e il Rivenditore non potranno essere ritenuti responsabili per il mancato rispetto, da parte dell'utente del prodotto, del progettista, dell'installatore o del proprietario dell'edificio, delle leggi vigenti, nonché dei regolamenti edilizi e di quelli relativi alla sicurezza. |
| D | Hersteller und Verkäufer übernehmen keine Haftung für Nichtbeachtung entsprechender Rechts- und Bauvorschriften sowie Sicherheitsanforderungen seitens Produktbenutzers, Architekten, Monteure oder Gebäudebesitzers. | NL | De fabrikant en verkoper zijn niet aansprakelijk voor gevolgen bij het niet opvolgen van toepasselijke wetten, bouwbesluiten en veiligheidsvoorschriften door de gebruiker van het product, de architect, de installateur of de eigenaar van het gebouw. |
| E | El fabricante y el vendedor no tienen ninguna responsabilidad por el incumplimiento de la ley vigente, normas de construcción y exigencias de seguridad por parte del usuario del producto, arquitecto, instalador o el propietario del edificio. | PL | Producent i Sprzedawca nie ponosi żadnej odpowiedzialności za nieprzestrzeganie stosownych przepisów prawa, przepisów budowlanych i wymagań bezpieczeństwa przez użytkownika produktu, architekta, montażystę lub właściciela budynku. |
| FR | Le fabricant et le revendeur ne prend aucune responsabilité de ne pas respecter les lois applicables, les règlements sur les bâtiments et les exigences de sécurité par l'utilisateur du produit, l'architecte, l'installateur ou le propriétaire du bâtiment. | RU | Nici producătorul, nici distribuitorul nu își vor asuma niciun fel de răspundere pentru nerespectarea legilor în vigoare, a legilor din domeniul construcțiilor sau a măsurilor de siguranță impuse utilizatorilor produsului, arhitecților, montajorilor sau proprietarilor clădirii. |
| GB | Manufacturer and Seller shall bear no liability for failure to comply with the applicable laws, building codes and safety requirements by the user of the product, architect, fitter or owner of the building. | RUS | В случае несоблюдения строительных норм и норм безопасности ответственность с производителя и продавца снимается. |
| H | A gyártó és a forgalmazó nem vállal semmilyen felelősséget a vonatkozó törvényi, építési és biztonsági előírások, termékbiztonsági, építési, beszállómester vagy építéltulajdonos általi be nem tartásáért. | SK | Výrobca a predajca nenesú žiadnu zodpovednosť za nedodržanie príslušných ustanovení zákona, stavebných predpisov a bezpečnostných požiadaviek užívateľom výrobku, architektom, montérom alebo majiteľom objektu. |



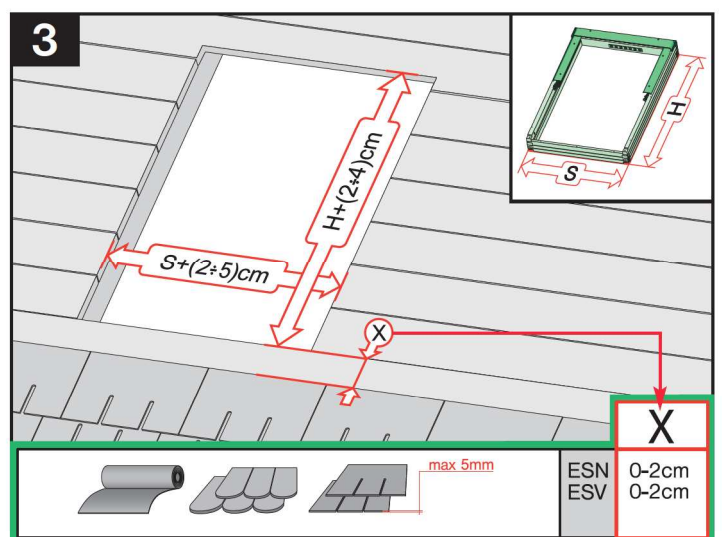
2



3

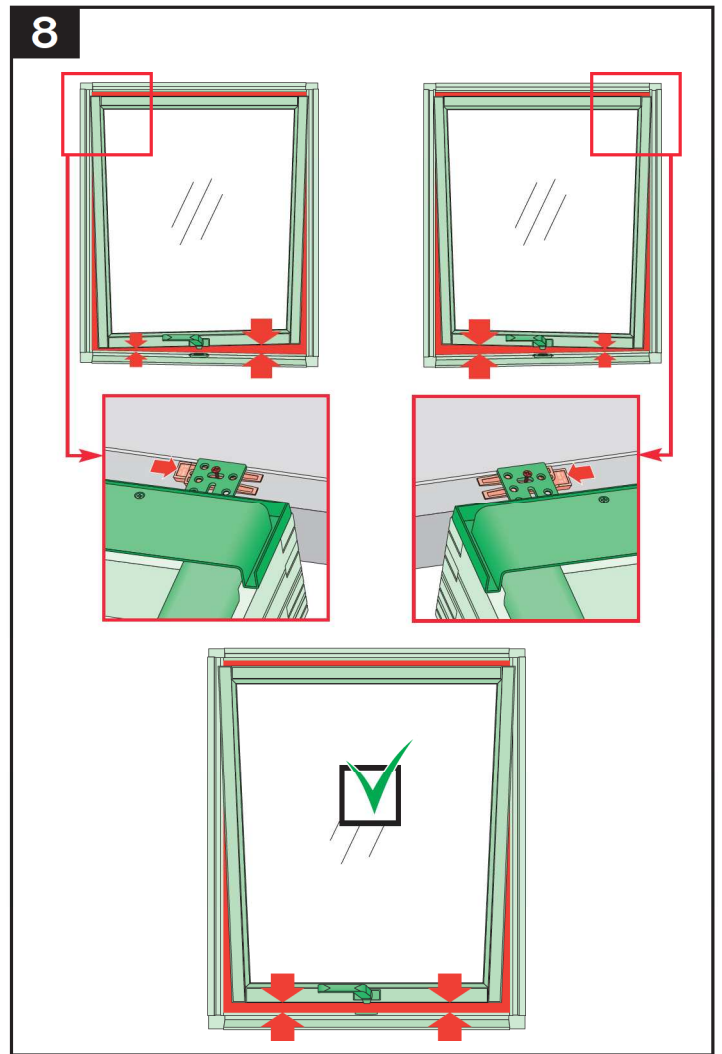
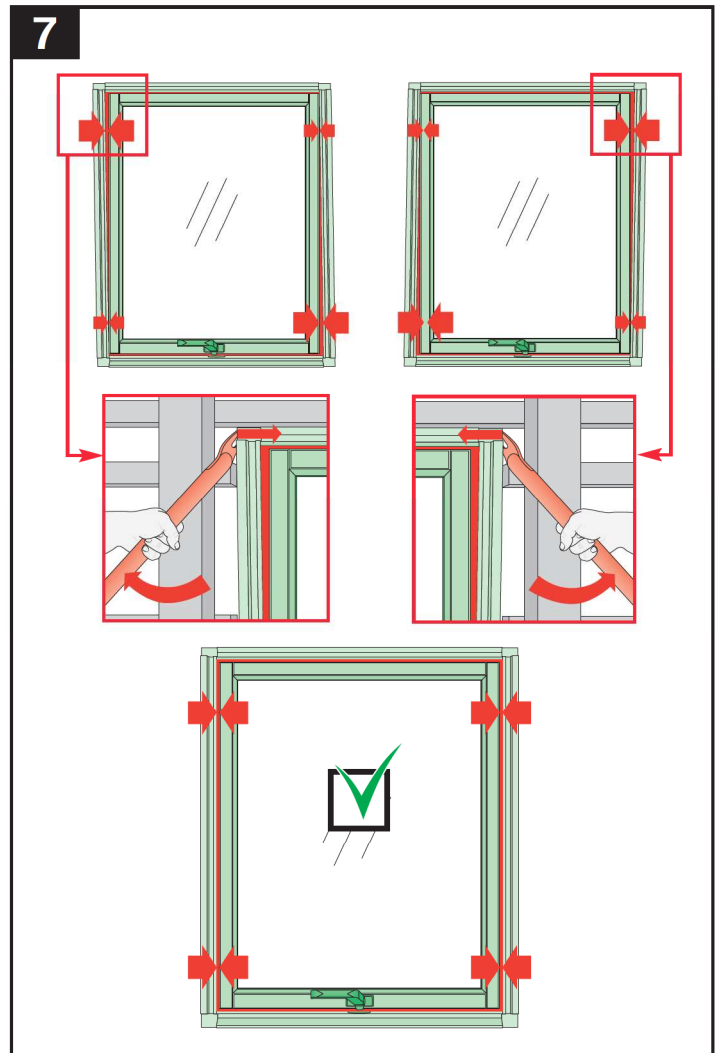
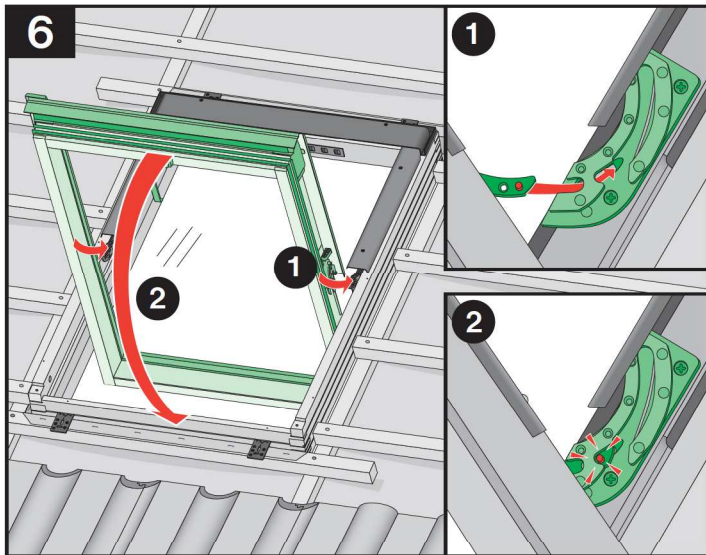
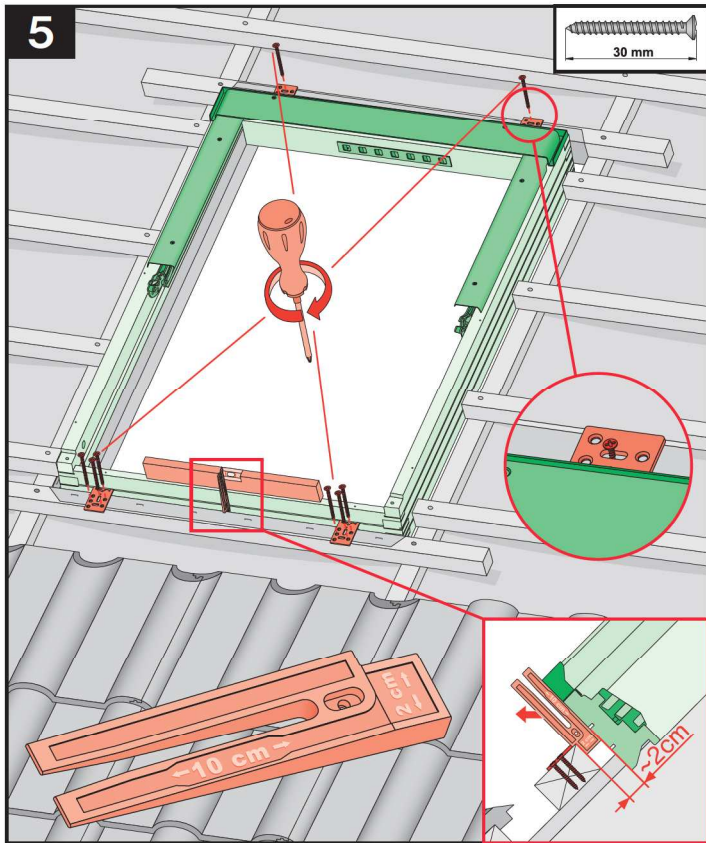
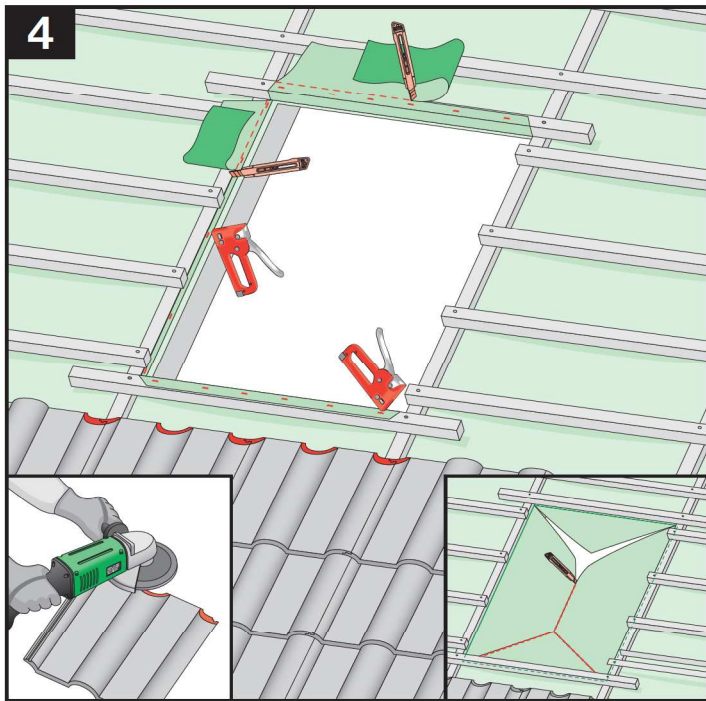


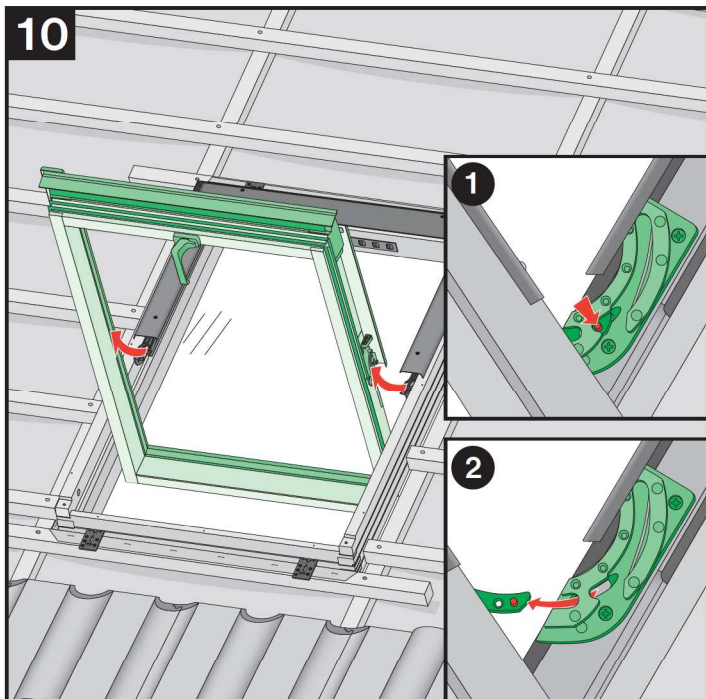
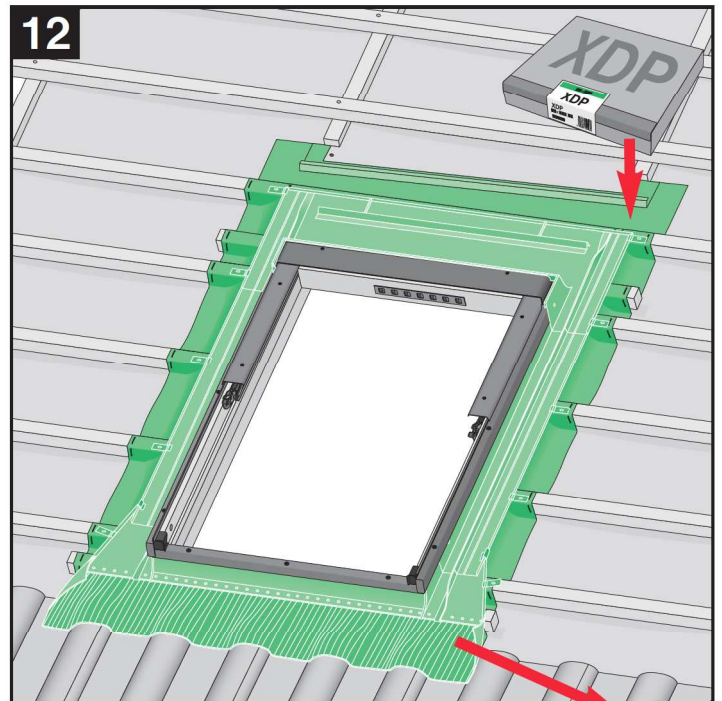
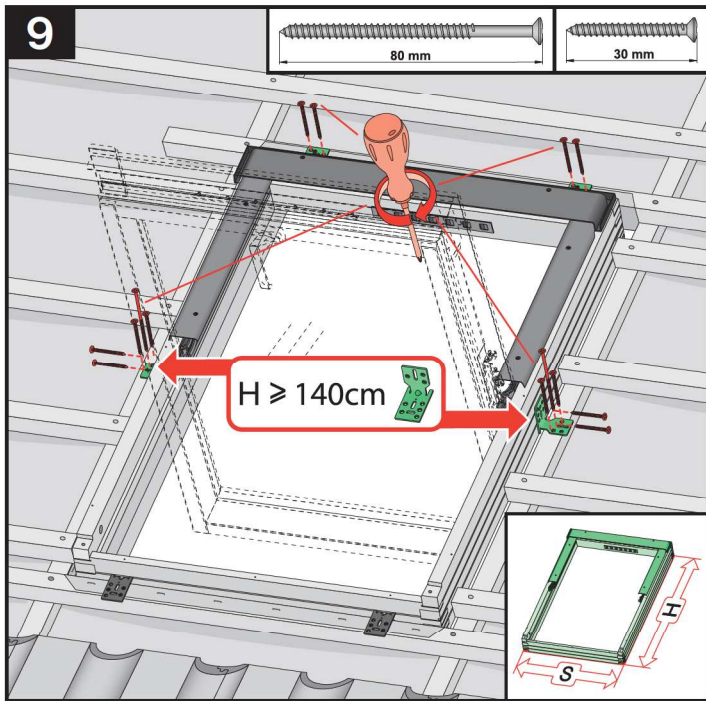
	max 90mm	EHN			EHN	7-10cm
		EHV			EHV	7-10cm
	max 45mm	EZN			EZN	6-8cm
		EZV			EZV	6-8cm
	390-420mm	EGV			EGV	4cm
	390-420mm	EPV			EPV	6cm
		ELN			ELN	0-2cm
		ELV			ELV	0-2cm
		EEN			EEN	0-2cm
		EEV			EEV	0-2cm



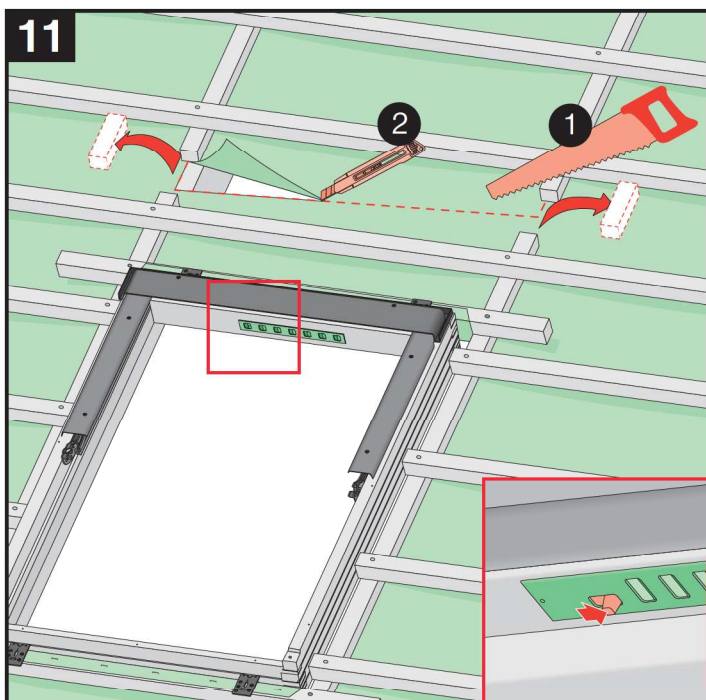
	max 5mm	ESN			ESN	0-2cm
		ESV			ESV	0-2cm

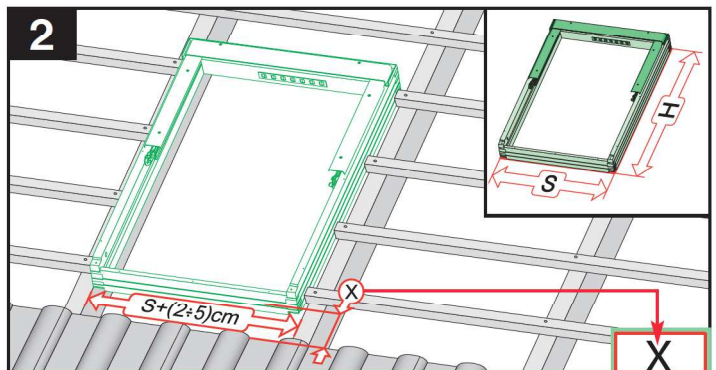
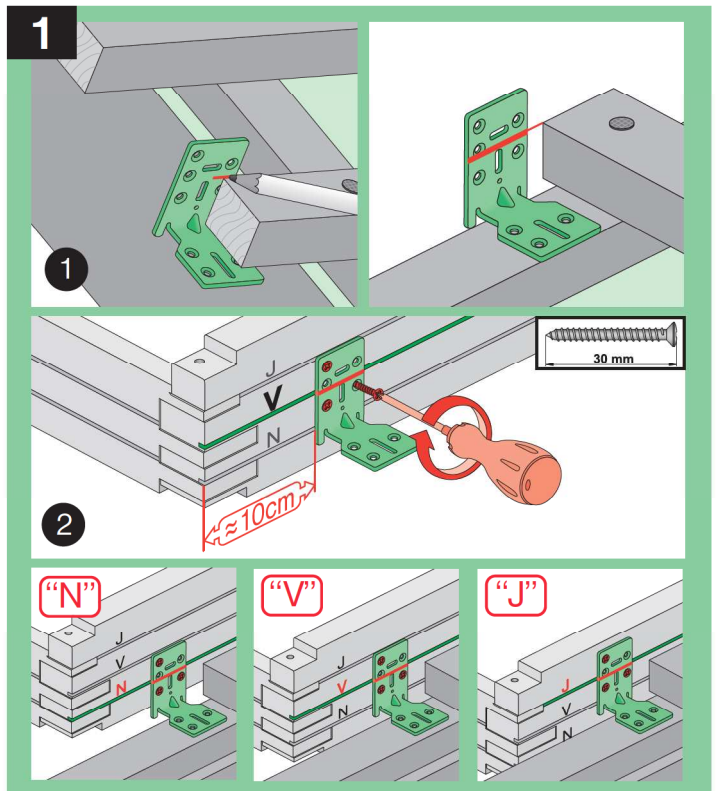
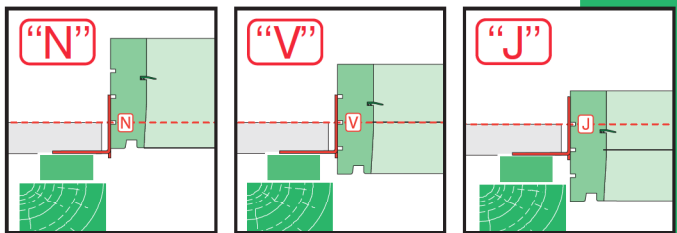
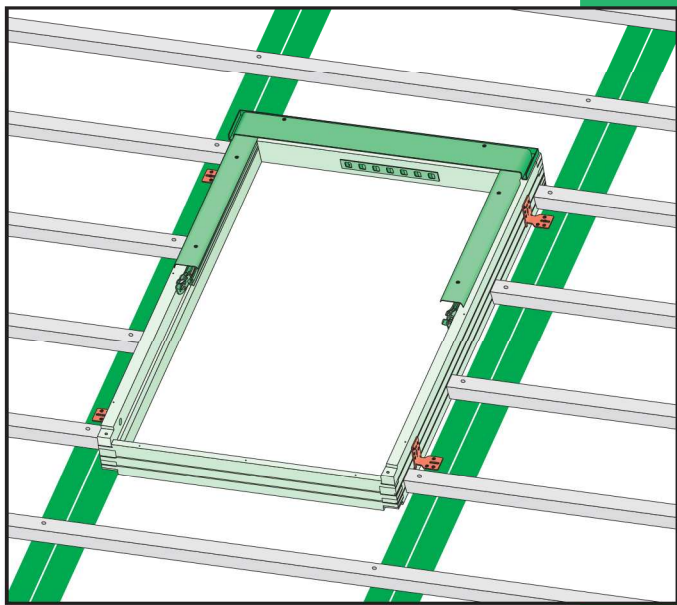
	max 90mm	EHN		
		EHV		
		-		
	max 45mm	EZN		
		EZV		
		-		
	max 15mm (N) max 5mm (V)	ELN		
		ELV		
		-		
	max 5mm	ESN		
		ESV		
		-		



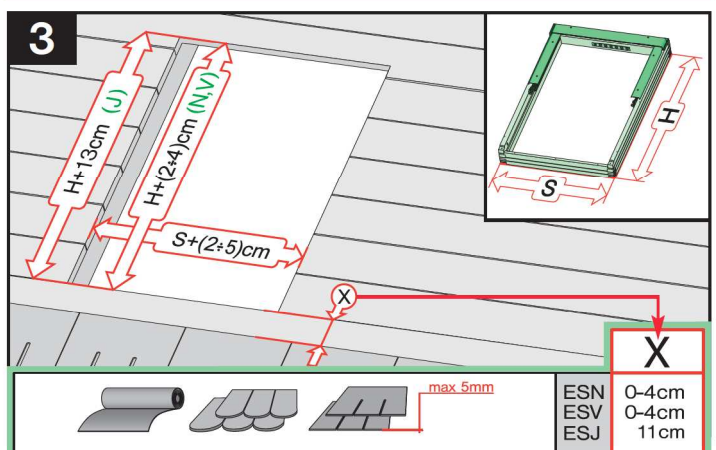


	max 90mm	EHN EHV
	max 45mm	EZN EZV
	max 5mm	ESN ESV
	350-420mm 12-16mm	EGV
	250-280mm max 18mm	EPV
	max 5mm (V) max 15mm (N)	ELN ELV
		EEN EEV

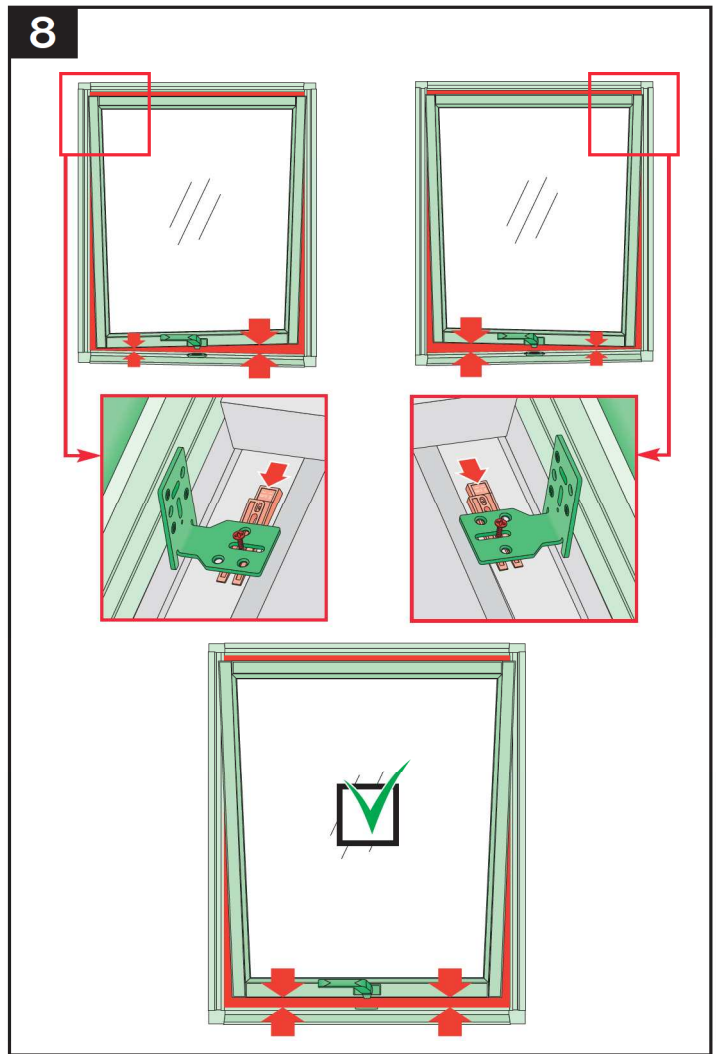
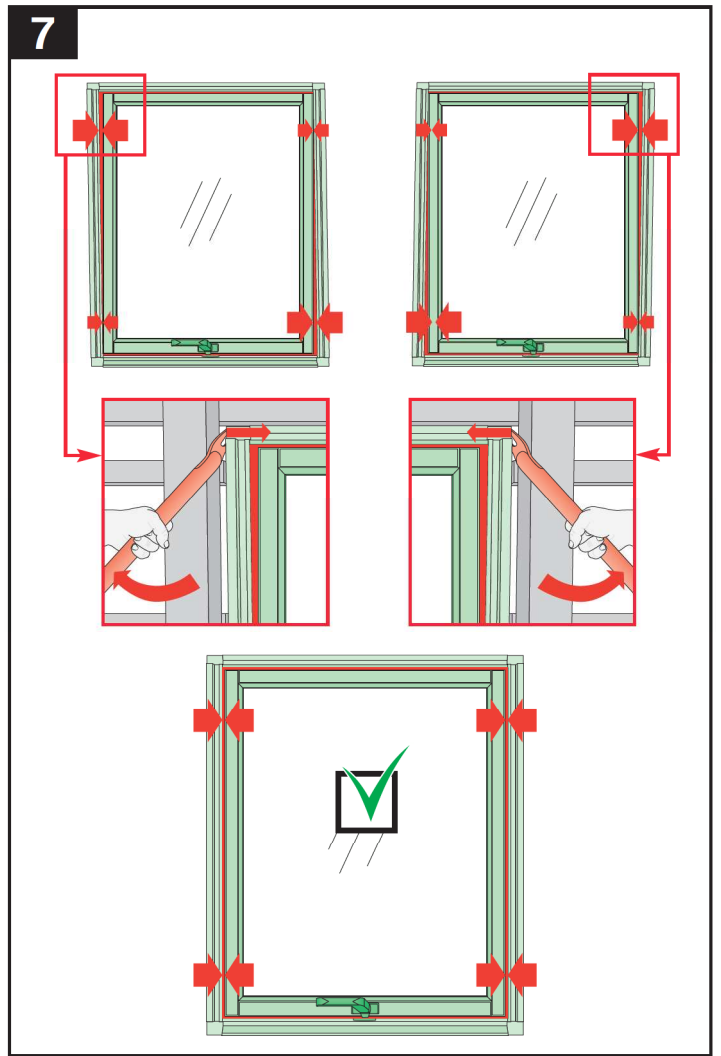
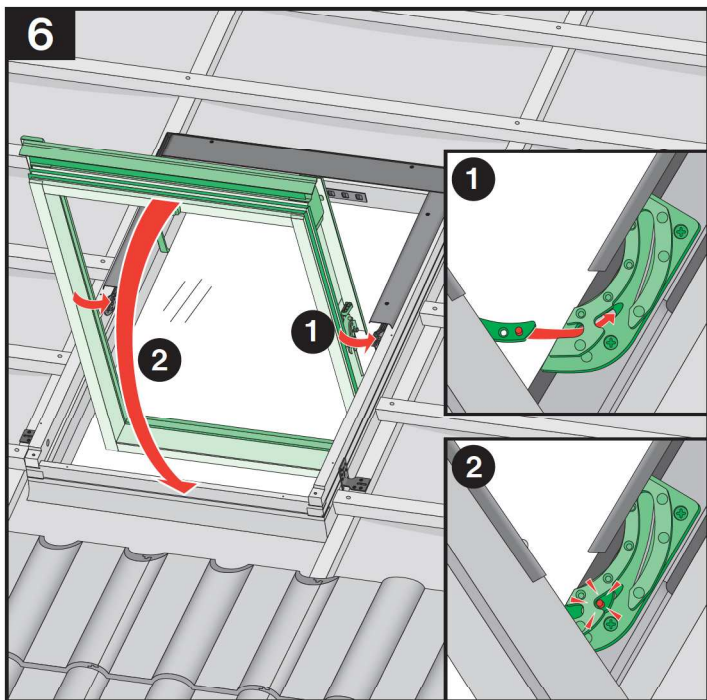
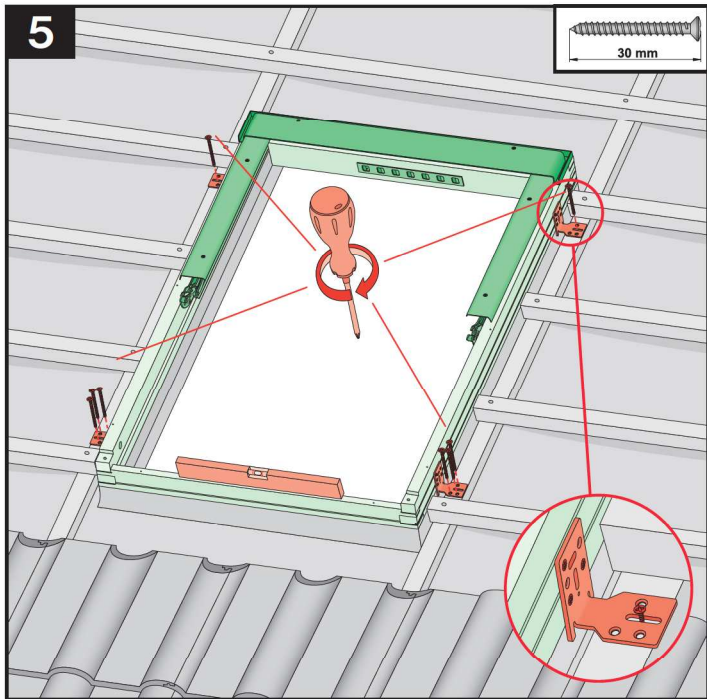
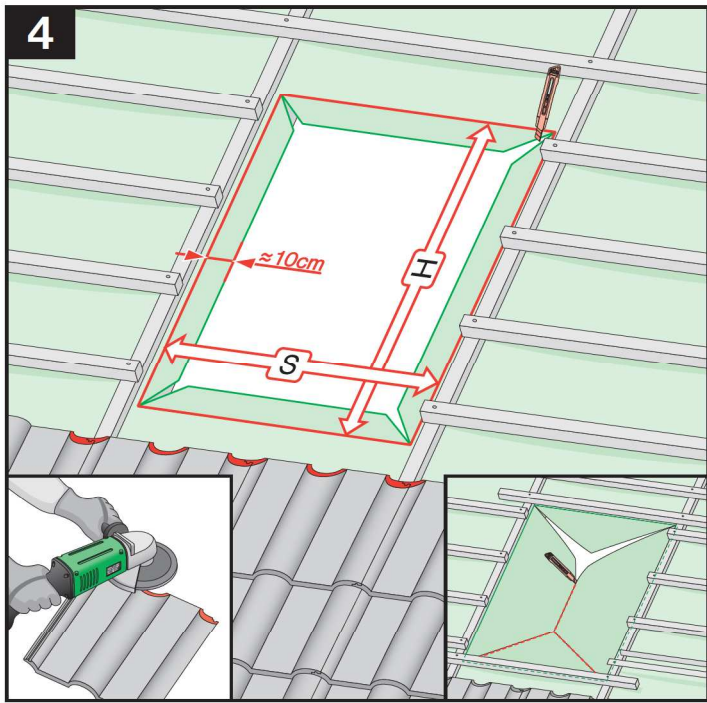


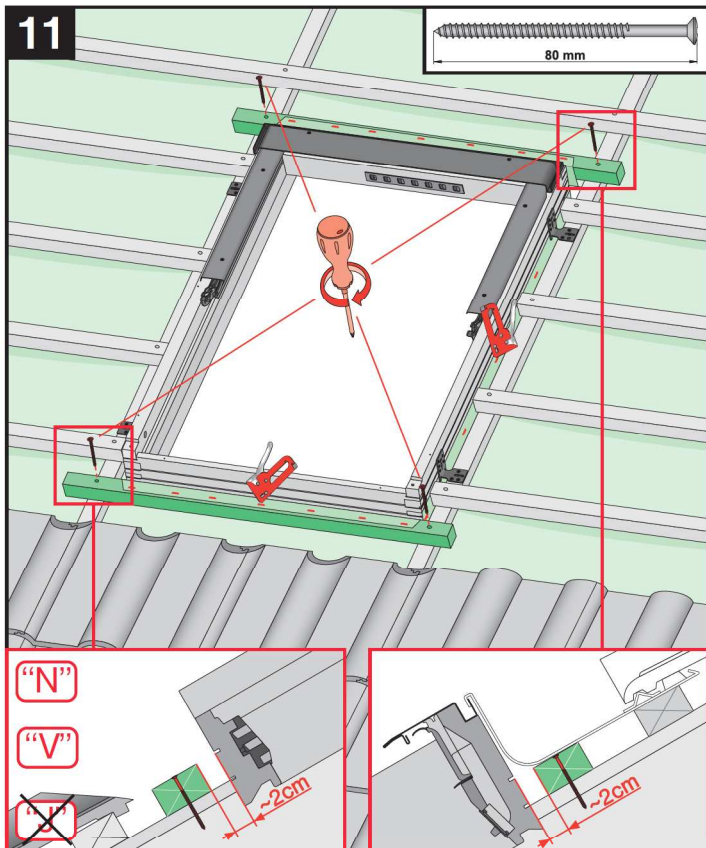
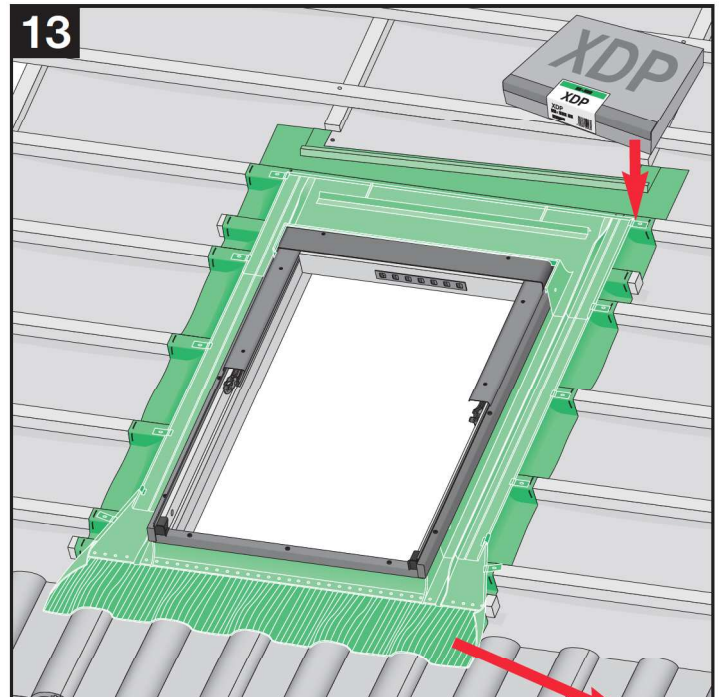
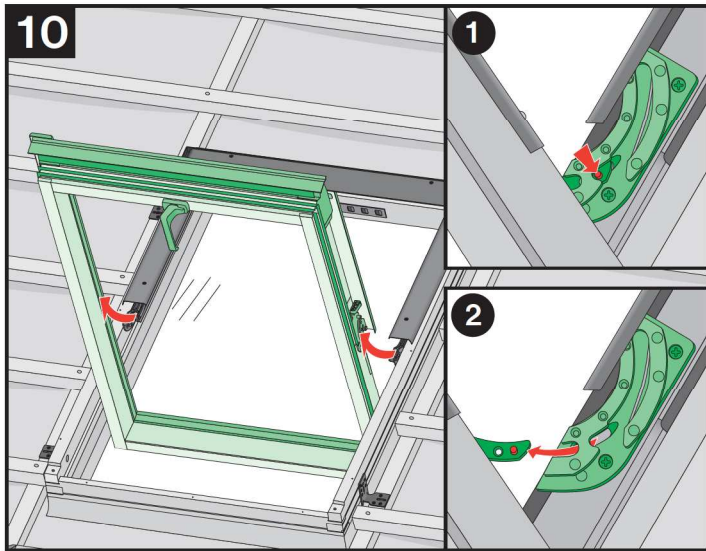
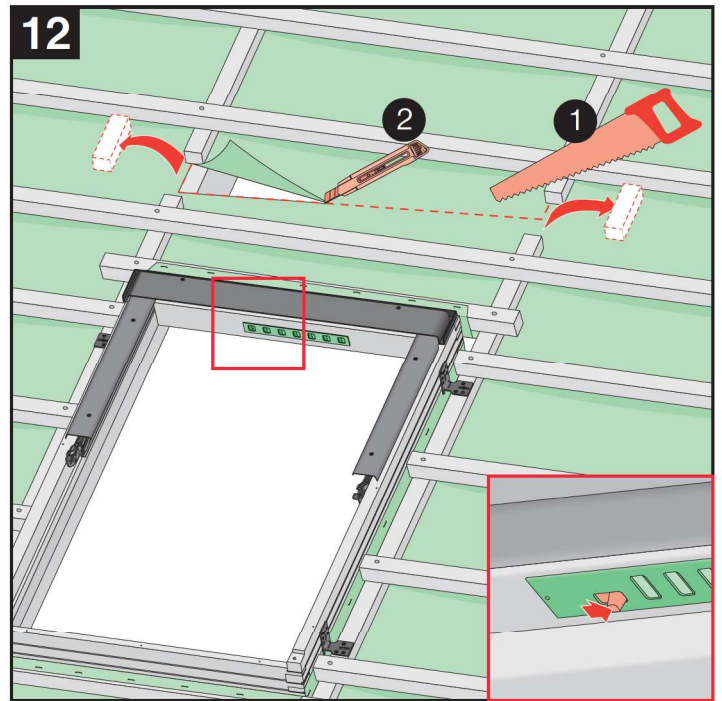
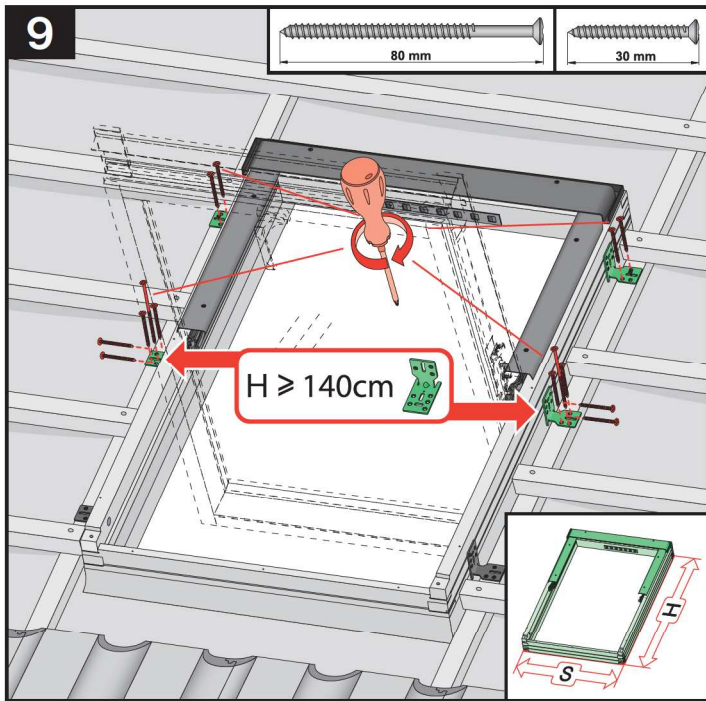


			max 90mm	EHN	9-12cm
			max 45mm	EHV	9-12cm
			max 45mm	EZN	8-10cm
			max 45mm	EVZ	8-10cm
			max 45mm	EZJ	20cm
			12-16mm	EGV	6cm
			max 18mm	EPV	8cm
			max 5mm (V,J) max 15mm (N)	ELN	0-4cm
			max 5mm (V,J) max 15mm (N)	ELV	0-4cm
			max 5mm (V,J) max 15mm (N)	ELJ	11cm
			max 5mm (V,J) max 15mm (N)	EEN	0-4cm
			max 5mm (V,J) max 15mm (N)	EEV	0-4cm
			max 5mm (V,J) max 15mm (N)	EEJ	11cm



			max 5mm	ESN	0-4cm
			max 5mm	ESV	0-4cm
			max 5mm	ESJ	11cm





	max 90mm	EHN EHV
	max 45mm	EZN EZV EZJ
	max 5mm	ESN ESV ESJ
	380-420mm 12-16mm	EGV
	250-280mm max 18mm	EPV
	max 5mm (V,J) max 15mm (N)	ELN ELV ELJ
		EEN EEV EEJ